

How To: Access the View Environment using the VMware Horizon View Client ~Mac OS Edition~

updated: 05-21-2013

Note: There are two parts to these instructions – installing and configuring the View client, and connecting to the RLASD View environment. These instructions are written using Mac OS and Safari. The details of each step may vary depending on your computer’s operating system and the internet browser used.

PART ONE: INSTALL AND CONFIGURE THE VIEW CLIENT

1. Open an internet browser and go to <https://view.ricelake.k12.wi.us>
2. You will see a screen presenting two options: “Install VMware Horizon View Client” or “VMware Horizon View HTML Access”.

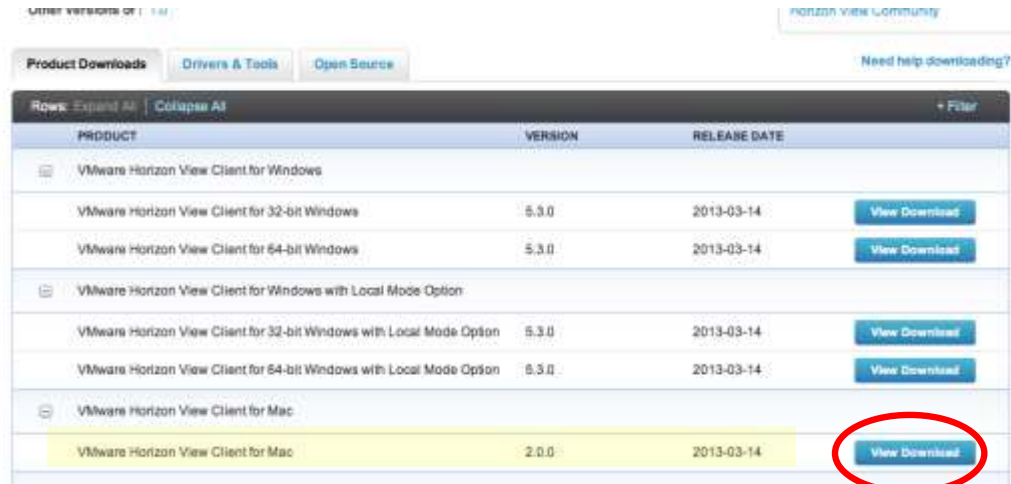


- i.
3. Click on “Install VMware Horizon View Client”.
4. You will be redirected to the VMware website client download page.

How To: Access the View Environment using the VMware Horizon View Client ~Mac OS Edition~

updated: 05-21-2013

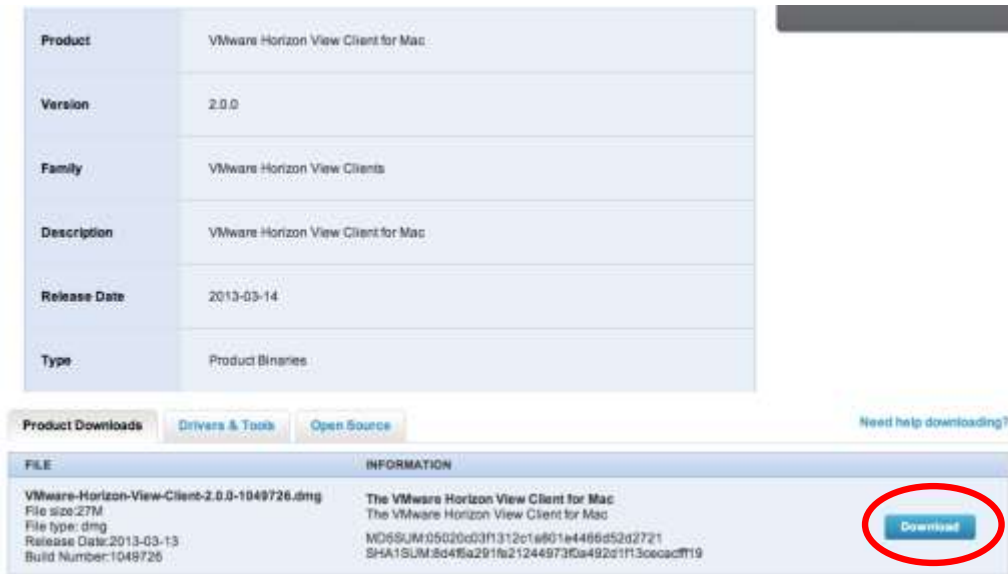
5. Identify the appropriate client version for your computer and click the 'View Download' button associated with it.



i.

Note: The website shown here and all associated links and images are controlled by VMware and may change without notice.

6. You will be taken to a page with the details of the client you have selected. Near the bottom of the page will be a link to download the installation file. Click the 'Download' button next to the filename.



i.

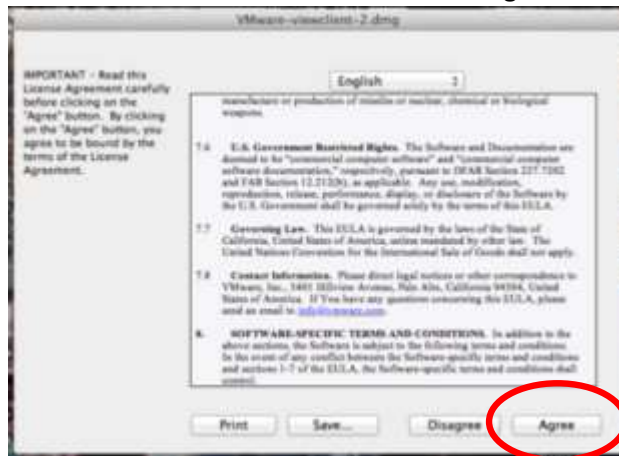
7. After the download completes, launch the installer from the 'Downloads' folder.

How To: Access the View Environment using the VMware Horizon View Client

~Mac OS Edition~

updated: 05-21-2013

8. Agree to the terms of the VMware User License Agreement.



- i. To complete the install, drag the VMware icon to the applications folder.



- i. You have successfully installed the VMware Horizon View Client!

Part Two begins on the next page...

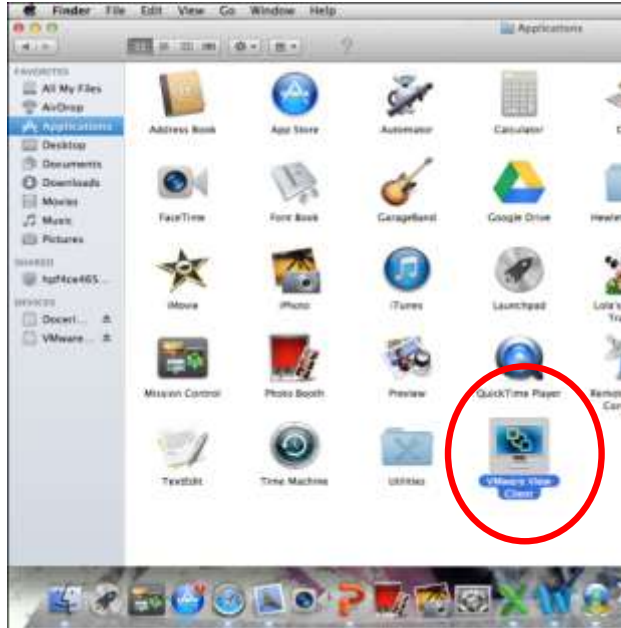
How To: Access the View Environment using the VMware Horizon View Client

~Mac OS Edition~

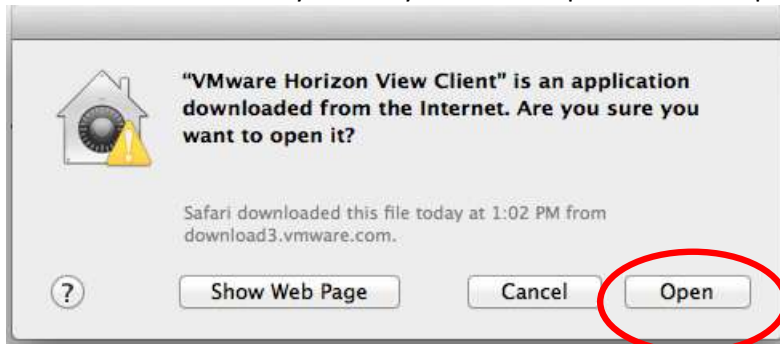
updated: 05-21-2013

PART TWO: CONNECT TO THE VIEW ENVIRONMENT

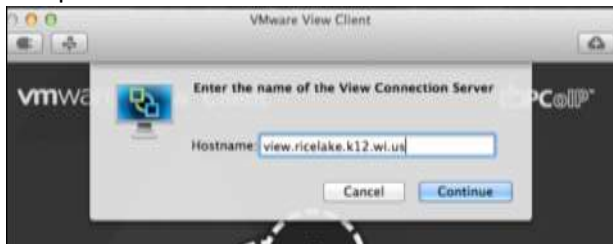
1. Launch the View Client from applications.



- i. If prompted with a message box stating "VMware Horizon View Client is an application downloaded from the internet. Are you sure you want to open it?" click 'Open'.



- i. If 'view.ricelake.k12.wi.us' is already listed as a server, double click the icon to initiate the connection and continue. If no servers are listed in the client, click 'Add Server' to add the connection to the View Environment and complete step 3.i.
 - i. Set the View Connection Server to: view.ricelake.k12.wi.us and click 'Continue' to complete the installation.



- ii. Enter your username and password as if you were logging in at school.

How To: Access the View Environment using the VMware Horizon View Client

~Mac OS Edition~

updated: 05-21-2013



i.

5. Ensure the Domain reads "RICELAKESD" and click 'Continue'.
6. Select the desktop that you want to connect to.



i.

7. You will now be logged in to a RLASD desktop environment. You may access any of the programs and files you would have access to in your classroom.
8. When finished working simply log-off.
 - i. Click on the Windows button then select 'Log off'.